



## ENGINE

|   |  |
|---|--|
| Model                                   | Isuzu AR-4HK1X<br>Turbocharged w/cooled<br>intercooler/ SCR System   |
| Emissions Certification                 | Tier 4 Final   |
| Fuel                                    | Requires ultra low-sulfur fuel<br>B5 biodiesel tolerant  |
| Type                                    | Water-cooled, 4 cycle<br>diesel, 4 cylinder inline,<br>High pressure common rail (electric system),<br>Turbocharger w/ air cooled intercooler,<br>SCR system |
| Cylinders                               | 4-cylinder in-line   |
| Displacement                            | 317 in <sup>3</sup> (5.2 L)  |
| Bore/Stroke                             | 4.53 x 4.92 in<br>(115 x 125 mm)   |
| Fuel injection                          | Direct injection – electronic  |
| Fuel filter                             | Replaceable,<br>full flow spin-on cartridge  |
| Air filter                              | Dry type element<br>w/ warning restriction indicator   |
| Oil filter                              | Replaceable,<br>full flow spin-on cartridge  |
| Engine gradeability:                    |  |
| Side-to-side                            | 35°  |
| Fore and aft                            | 35°  |
| Net horsepower – SAE J1349 @ 1800 RPM:  | 160 hp (119.3 kW)  |
| Net Max. Torque – SAE J1349 @ 1600 RPM: | 458 lb-ft (621 N·m)  |
| Cooling operating range:                | 109° to -13° F (43° to -25° C)   |
| Oil                                     | Requires low-ash oil CJ-4  |

## DRIVETRAIN

|                     |  |
|---------------------|--|
| Travel control      | Dual stage relief/<br>counter balance design |
| Brakes              | Mechanical disc                              |
| Service brakes      | SAHR disc – each motor                       |
| Two speed travel:   |  |
| Max. high speed     | 3.1 mph (5.0 km/h)                           |
| Max. low speed      | 2.0 mph (3.2 km/h)                           |
| Automatic downshift |  |
| Drawbar pull        | 45,000 lbf (200 kN)                          |
| Gradeability        | 70% - 35 degree slope                        |

## ELECTRICAL

|                          |                 |
|--------------------------|-----------------|
| Voltage                  | 24 Volts        |
| Alternator rating        | 50 amp          |
| Batteries                | 2 x 12 Volt     |
| Battery reserve capacity | 92 Ah/5 hours   |
| Work lights – 4          | 24 Volt/70 watt |
| 1 boom, 1 upper, 2 cab   |                 |
| 1 Operator cab           | 10 watt         |

## OPERATOR ENVIRONMENT

|                                  |                |
|----------------------------------|----------------|
| Air-conditioner output           | 13,492 BTU/hr  |
| Heater output                    | 12,892 BTU/hr  |
| Sound level inside cab – ISO6395 | 70 dBA         |
| Electrical outlet                | 12 Volt        |
| Cab interior light               | 10 watt        |
| Rear view camera                 | Standard       |
| Seat                             | Air-suspension |

## ATTACHMENT

|                       |                       |
|-----------------------|-----------------------|
| Boom                  | 18 ft 8 in (5 700 mm) |
| Arm options           | 9 ft 8 in (2.94 m)    |
| Bucket digging force* | 31,800 lbf (142 kN)   |
| w/ Auto Power Boost   | 34,600 lbf (154 kN)   |

## OPERATING WEIGHT

|                  |                       |
|------------------|-----------------------|
| Operating weight | 56,900 lb (25 800 kg) |
| w/ shoes         | 2 ft 7 in (800 mm)    |
| w/ boom          | 18 ft 8 in (5 700 mm) |
| w/ arm           | 9 ft 8 in (2 940 mm)  |
| w/ bucket        | 1,435 lb (651 kg)     |
| w/ counterweight | 16,400 lb (7 430 kg)  |

NOTE: w/ operator/full fuel/standard equipment.

## GROUND PRESSURE

|   |                   |
|---|-------------------|
| @ Standard operating weight                   | 5.8 psi (0.4 bar) |
| w/ 31.5 in (800 mm) triple semi-grouser shoes |                   |

## HYDRAULICS

|                      |  |
|----------------------|--|
| System design        | Open center                                |
| Main pumps           | Two variable displacement/<br>axial piston |
| Max. rated flow      | 55.7 gpm (211 L/min)                       |
| System pressures:    |  |
| Boom, arm and bucket | 4,975 (343 bar)                            |
| w/ power boost       | 5,410 (380 bar)                            |
| Travel circuit       | 4,970 (343 bar)                            |
| Swing circuit        | 4,260 (300 bar)                            |
| Pilot pump           | 1 x gear design                            |
| Max. capacity        | 4.8 gpm (18 L/min)                         |

|  |                           |
|--|---------------------------|
| Controls   | w/ boom/arm holding valve |
| Right track travel,<br>bucket, boom and<br>arm acceleration. | Four-spool section        |

# CX245D

SHORT RADIUS EXCAVATOR

TIER 4 FINAL CERTIFIED

|   |   |
|---|---|
| Left track travel,<br>auxiliary, swing, boom<br>acceleration and arm. | Five-spool section                                  |
| Work Mode selections  | SP: Speed Priority<br>H: Heavy Duty<br>A: Automatic |
| Swing motor   | Fixed displacement axial piston                     |
| Swing final drive   | Planetary gear reduction                            |
| Travel motor  | Two-speed independent<br>travel/axial piston        |

## HYDRAULIC CYLINDERS

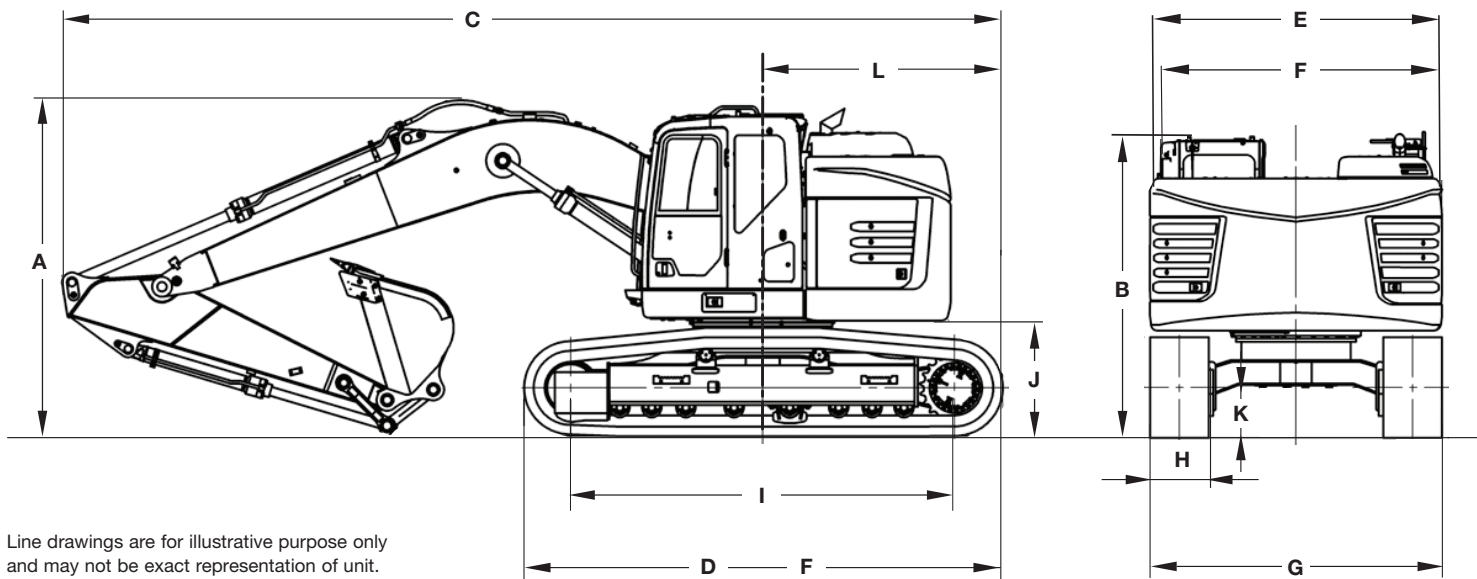
|                       |                    |
|-----------------------|--------------------|
| Boom cylinders        | Two (2)            |
| Cylinder bore         | 4.7 in (120 mm)    |
| Cylinder rod diameter | 3.3 in (85 mm)     |
| Cylinder stroke       | 53.9 in (1 370 mm) |
| Arm cylinder          | One (1)            |
| Cylinder bore         | 5.5 in (140 mm)    |
| Cylinder rod diameter | 3.9 in (100 mm)    |
| Cylinder stroke       | 57.5 in (1 460 mm) |
| Bucket cylinder       | One (1)            |
| Cylinder bore         | 4.7 in (120 mm)    |
| Cylinder rod diameter | 3.3 in (85 mm)     |
| Cylinder stroke       | 39.8 in (1 010 mm) |

## SERVICE CAPACITIES

|                         |                  |
|-------------------------|------------------|
| Fuel tank               | 85 gal (320 L)   |
| Hydraulic system        | 67 gal (252 L)   |
| Hydraulic tank          | 30 gal (114 L)   |
| Engine oil w/ filter    | 6 gal (23.1 L)   |
| Swing drive             | 5.3 qt (5 L)     |
| Final drive – each side | 5.3 qt (5 L)     |
| Cooling system          | 8.4 gal (31.9 L) |

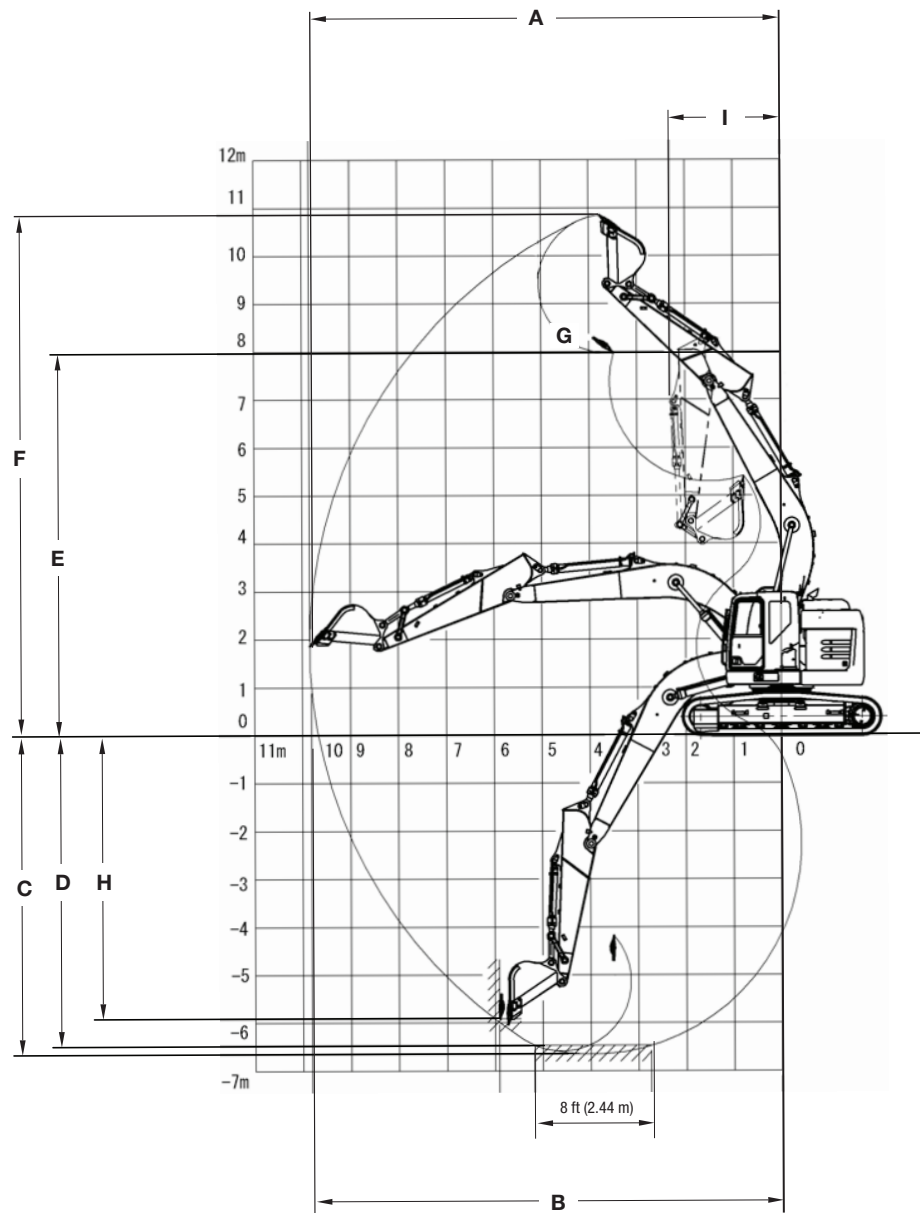
## OTHER SPECIFICATIONS

|                        |                            |
|------------------------|----------------------------|
| Swing speed            | 0 – 11.5 RPM               |
| Swing torque           | 47,204 lb-ft (64 000 N·m)  |
| Swing brake            | Mechanical disc            |
| Undercarriage:         |                            |
| Length                 | 14 ft 8 in (4 470 mm)      |
| Track gauge            | 7 ft 9 in (2 390 mm)       |
| Carrier rollers        | 2                          |
| Track rollers          | 8                          |
| Shoes – Triple grouser | 49                         |
| Shoe width – std.      | 2 ft 7 in (800 mm)         |
| Link pitch             | 7 in (190 mm)              |
| Track:                 |                            |
| Chain                  | Grease lubricated/strutted |
| Guides                 | Single                     |
| Adjustment             | Hydraulic                  |



## DIMENSIONS

|   | 7 ft 10 in (2.40 m) Arm | 9 ft 8 in (2.94 m) Arm |
|---|-------------------------|------------------------|
| <b>A.</b> Overall height - with attachment                    | 10 ft 5 in (3 180 mm)   | 10 ft 0 in (2 980 mm)  |
| <b>B.</b> Cab height  | 10 ft 0 in (3 040 mm)   | 10 ft 0 in (3 040 mm)  |
| <b>C.</b> Overall length - with attachment                    | 29 ft 3 in (8 920 mm)   | 29 ft 0 in (8 830 mm)  |
| <b>D.</b> Overall length - without attachment                 | 14 ft 8 in (4 470 mm)   | 14 ft 8 in (4 470 mm)  |
| <b>E.</b> Width of upper structure                            | 9 ft 10 in (2 990 mm)   | 9 ft 10 in (2 990 mm)  |
| <b>F.</b> Track overall length                                | 14 ft 8 in (4 470 mm)   | 14 ft 8 in (4 470 mm)  |
| <b>G.</b> Track overall width - with 23.6 in (600 mm) shoes   | 10 ft 4 in (2 990 mm)   | 10 ft 4 in (2 990 mm)  |
| Track overall width - with 23.6 in (800 mm) shoes             | 10 ft 6 in (3 190 mm)   | 10 ft 6 in (3 190 mm)  |
| <b>H.</b> Track shoe width                                    | 2 ft 7 in (800 mm)      | 2 ft 7 in (800 mm)     |
| <b>I.</b> Center to center-idler to sprocket                  | 12 ft 0 (3 660 mm)      | 12 ft 0 in (3 660 mm)  |
| <b>J.</b> Upper structure ground clearance                    | 3 ft 4 in (1 020 mm)    | 3 ft 4 in (1 020 mm)   |
| <b>K.</b> Minimum ground clearance                            | 1 ft 5 in (440 mm)      | 1 ft 5 in (440 mm)     |
| <b>L.</b> Rear tail swing radius                              | 6 ft 4 in (1 790 mm)    | 6 ft 4 in (1 790 mm)   |
| Operating weight  |                         | 59,600 lb (25 800 kg)  |
| Ground pressure - with 9 ft 8 in (2.94 m) arm, 800 mm grouser |                         | 5.8 psi (0.4 bar)      |



#### PERFORMANCE SPECS

|  | 7 ft 10 in (2.40 m) Arm | 9 ft 8 in (2.94 m) Arm |
|--|-------------------------|------------------------|
| A. Maximum dig radius                          | 30 ft 9 in (9 370 mm)   | 32 ft 4 in (9 850 mm)  |
| B. Dig radius at ground level                  | 30 ft 1 in (9 180 mm)   | 31 ft 9 in (9 670 mm)  |
| C. Maximum dig depth                           | 20 ft 1 in (6 120 mm)   | 21 ft 10 in (6 650 mm) |
| D. Dig depth - 8 ft 0 in (2.44 m) level bottom | 19 ft 5 in (5 910 mm)   | 21 ft 3 in (6 480 mm)  |
| E. Dump height                                 | 25 ft 0 in (7 630 mm)   | 26 ft 2 in (7 970 mm)  |
| F. Maximum reach height                        | 34 ft 7 in (10 520 mm)  | 36 ft 1 in (10 860 mm) |
| G. Bucket rotation                             | 177°                    | 177°                   |
| H. Maximum vertical wall dig depth             | 18 ft 0 in (5 480 mm)   | 19 ft 5 in (5 920 mm)  |
| I. Minimum swing radius                        |                         |                        |
| Arm digging force:                             |                         |                        |
| Standard                                       | 27,600 lbf (123 kN)     | 23,100 lbf (123 kN)    |
| Power Boost                                    | 30,000 lbf (133 kN)     | 25,100 lbf (112 kN)    |
| Bucket digging force                           |                         |                        |
| Standard                                       | 31,800 lbf (142 kN)     | 31,800 lbf (142 kN)    |
| Power boost                                    | 34,600 lbf (154 kN)     | 34,600 lbf (154 kN)    |

# LIFT CAPACITIES

**CX245D SR – 18 ft 8 in (5.70 m) Boom and 7 ft 11 in (2.40 m) Arm** Lift capacities using a bucket weighing 1,540 lb (700 kg) and 16,370 lb (7 430 kg) counterweight.

| Load (Lift Point Height) | MINIMUM REACH        |                         |                         | 0 ft (0 m) |      | 5 ft (1.5 m)            |                         | 10 ft (3 m)             |                         | 15 ft (4.5 m)           |                        |
|--------------------------|----------------------|-------------------------|-------------------------|------------|------|-------------------------|-------------------------|-------------------------|-------------------------|-------------------------|------------------------|
|                          | @                    | END                     | SIDE                    | END        | SIDE | END                     | SIDE                    | END                     | SIDE                    | END                     | SIDE                   |
| <b>+30 ft (9 m)</b>      | 13 ft 10 in (4.14 m) | 5,600 lb* (2 180 kg)*   | 5,600 lb* (2 180 kg)*   |            |      |                         |                         |                         |                         | 10,100 lb* (3 540 kg)*  | 10,100 lb* (3 540 kg)* |
| <b>+25 ft (7.5 m)</b>    | 14 ft 2 in (4.31 m)  | 7,450 lb* (3 610 kg)*   | 7,450 lb* (3 610 kg)*   |            |      |                         |                         |                         |                         | 8,150 lb* (3 710 kg)*   | 8,150 lb* (3 710 kg)*  |
| <b>+20 ft (6 m)</b>      | 13 ft 2 in (3.95 m)  | 11,600 lb* (5 330 kg)*  | 11,600 lb* (5 330 kg)*  |            |      |                         |                         |                         |                         | 11,350 lb* (5 210 kg)*  | 11,350 lb* (5 210 kg)* |
| <b>+15 ft (4.5 m)</b>    | 5 ft 9 in (1.74 m)   | 13,350 lb* (8 150 kg)*  | 13,350 lb* (8 150 kg)*  |            |      |                         |                         | 18,100 lb* (8 480 kg)*  | 18,100 lb* (8 480 kg)*  | 14,400 lb* (6 700 kg)*  | 14,400 lb* (6 700 kg)* |
| <b>+10 ft (3 m)</b>      | 9 ft 8 in (2.97 m)   | 14,400 lb* (6 400 kg)*  | 14,400 lb* (6 400 kg)*  |            |      |                         |                         | 26,950 lb* (10 340 kg)* | 26,950 lb* (10 340 kg)* | 18,600 lb* (8 590 kg)*  | 17,150 lb (7 950 kg)*  |
| <b>+5 ft (1.5 m)</b>     | 10 ft 5 in (3.16 m)  | 13,500 lb* (6 210 kg)*  | 13,500 lb* (6 210 kg)*  |            |      |                         |                         |                         |                         | 21,750 lb* (10 000 kg)* | 16,000 lb (7 420 kg)   |
| <b>Groundline</b>        | 8 ft 5 in (2.57 m)   | 12,700 lb* (5 790 kg)*  | 12,700 lb* (5 790 kg)*  |            |      |                         |                         | 17,750 lb* (7 800 kg)*  | 17,750 lb* (7 800 kg)*  | 22,950 lb* (10 600 kg)* | 15,300 lb (7 110 kg)   |
| <b>-5 ft (-1.5 m)</b>    | 3 ft 0 in (0.93 m)   | 12,500 lb* (5 620 kg)*  | 12,500 lb* (5 620 kg)*  |            |      | 19,450 lb* (8 730 kg)*  | 19,450 lb* (8 730 kg)*  | 26,000 lb* (11 470 kg)* | 26,000 lb* (11 470 kg)* | 22,650 lb* (10 460 kg)* | 15,250 lb (7 090 kg)   |
| <b>-10 ft (-3 m)</b>     | 3 ft 1 in (0.92 m)   | 22,250 lb* (9 860 kg)*  | 22,250 lb* (9 860 kg)*  |            |      | 25,650 lb* (11 440 kg)* | 25,650 lb* (11 440 kg)* | 30,050 lb* (13 880 kg)* | 29,950 lb (13 880 kg)*  | 21,000 lb* (9 710 kg)*  | 15,500 lb (7 200 kg)*  |
| <b>-15 ft (-4.5 m)</b>   | 6 ft 1 in (1.77 m)   | 32,300 lb* (15 340 kg)* | 32,300 lb* (15 340 kg)* |            |      |                         |                         | 23,500 lb* (10 960 kg)* | 23,500 lb* (10 960 kg)* | 16,600 lb* (7 790 kg)*  | 15,800 lb (7 330 kg)   |

| Load (Lift Point Height) | 20 ft (6 m)            |                        | 25 ft (7.5 m)          |                     | 30 ft (9 m) |            | MAXIMUM REACH        |                        |                       |
|--------------------------|------------------------|------------------------|------------------------|---------------------|-------------|------------|----------------------|------------------------|-----------------------|
|                          | END                    | SIDE                   | END                    | SIDE                | END         | SIDE       | @                    | END                    | SIDE                  |
| <b>+30 ft (9 m)</b>      |                        |                        |                        |                     |             |            | 16 ft 8 in (5.32 m)  | 8,600 lb* (3 810 kg)*  | 8,600 lb* (3 810 kg)* |
| <b>+25 ft (7.5 m)</b>    | 9,850 lb* (4 450 kg)*  | 9,850 lb* (4 450 kg)*  |                        |                     |             |            | 22 ft 11 in (7.08 m) | 7,400 lb* (3 330 kg)*  | 7,400 lb* (3 330 kg)* |
| <b>+20 ft (6 m)</b>      | 10,900 lb* (4 980 kg)* | 10,900 lb* (4 980 kg)* | 9,800 lb* (4 500 kg)*  | 8,050 lb (3 770 kg) |             |            | 26 ft 5 in (8.12 m)  | 7,000 lb* (3 160 kg)*  | 7,000 lb* (3 160 kg)* |
| <b>+15 ft (4.5 m)</b>    | 11,950 lb* (5 530 kg)* | 11,450 lb (5 320 kg)   | 10,750 lb* (4 990 kg)* | 7,900 lb (3 670 kg) |             |            | 28 ft 7 in (8.72 m)  | 6,950 lb* (3 140 kg)*  | 6,150 lb (2 780 kg)   |
| <b>+10 ft (3 m)</b>      | 13,950 lb* (6 460 kg)* | 10,950 lb (5 070 kg)   | 11,700 lb* (5 360 kg)* | 7,600 lb (3 540 kg) | (3 240 kg)* | (2 560 kg) | 29 ft 6 in (9.00 m)  | 7,100 lb* (3 230 kg)*  | 5,650 lb (2 560 kg)   |
| <b>+5 ft (1.5 m)</b>     | 15,700 lb* (7 250 kg)* | 10,350 lb (4 810 kg)   | 11,900 lb (5 530 kg)   | 7,300 lb (3 400 kg) |             |            | 29 ft 6 in (9.00 m)  | 7,550 lb* (3 430 kg)*  | 5,550 lb (2 510 kg)   |
| <b>Groundline</b>        | 16,500 lb (7 660 kg)*  | 9,950 lb (4 630 kg)    | 11,650 lb (5 420 kg)   | 7,100 lb (3 300 kg) |             |            | 28 ft 7 in (8.72 m)  | 8,350 lb* (3 790 kg)*  | 5,750 lb (2 610 kg)   |
| <b>-5 ft (-1.5 m)</b>    | 16,350 lb (7 600 kg)   | 9,850 lb (4 570 kg)    | 11,650 lb (5 410 kg)   | 7,100 lb (3 290 kg) |             |            | 26 ft 9 in (8.16 m)  | 9,750 lb* (4 420 kg)*  | 6,400 lb (2 900 kg)   |
| <b>-10 ft (-3 m)</b>     | 15,300 lb* (7 110 kg)* | 10,050 lb (4 660 kg)   |                        |                     |             |            | 23 ft 8 in (7.25 m)  | 11,350 lb* (5 140 kg)* | 7,800 lb (3 520 kg)   |
| <b>-15 ft (-4.5 m)</b>   |                        |                        |                        |                     |             |            | 19 ft 0 in (5.87 m)  | 11,100 lb* (5 050 kg)* | 11,100 lb* (4 960 kg) |

NOTE: \*Lift capacities marked with an asterisk (\*) are limited by 87% hydraulic capacity and 75% tipping capacity.

# LIFT CAPACITIES

**CX245D SR – 18 ft 8 in (5.70 m) Boom and 9 ft 8 in (2.94 m) Arm** Lift capacities using a bucket weighing 1,440 lb (650 kg) and 16,370 lb (7 430 kg) counterweight.

| Load (Lift Point Height) | MINIMUM REACH        |                         |                         | 0 ft (0 m) |      | 5 ft (1.5 m)            |                         | 10 ft (3 m)             |                         | 15 ft (4.5 m)           |                        |
|--------------------------|----------------------|-------------------------|-------------------------|------------|------|-------------------------|-------------------------|-------------------------|-------------------------|-------------------------|------------------------|
|                          | @                    | END                     | SIDE                    | END        | SIDE | END                     | SIDE                    | END                     | SIDE                    | END                     | SIDE                   |
| <b>+30 ft (9 m)</b>      | 14 ft 7 in (4.52 m)  | 4,400 lb* (2 090 kg)*   | 4,400 lb* (2 090 kg)*   |            |      |                         |                         |                         |                         | 4,800 lb*               | 4,800 lb*              |
| <b>+25 ft (7.5 m)</b>    | 15 ft 10 in (4.83 m) | 8,050 lb* (3 820 kg)*   | 8,050 lb* (3 820 kg)*   |            |      |                         |                         |                         |                         |                         |                        |
| <b>+20 ft (6 m)</b>      | 15 ft 0 in (4.54 m)  | 9,850 lb* (4 520 kg)*   | 9,850 lb* (4 520 kg)*   |            |      |                         |                         |                         |                         |                         |                        |
| <b>+15 ft (4.5 m)</b>    | 9 ft 7 in (2.9 m)    | 10,300 lb* (4 810 kg)*  | 10,300 lb* (4 810 kg)*  |            |      |                         |                         | 11,000 lb* (5 050 kg)*  | 11,000 lb* (5 050 kg)*  | 12,400 lb* (5 760 kg)*  | 12,400 lb* (5 760 kg)* |
| <b>+10 ft (3 m)</b>      | 7 ft 2 in (2.21 m)   | 19,050 lb* (8 290 kg)*  | 19,050 lb* (8 290 kg)*  |            |      |                         |                         | 23,900 lb* (11 070 kg)* | 23,900 lb* (11 070 kg)* | 17,200 lb* (7 980 kg)*  | 17,200 lb* (7 980 kg)* |
| <b>+5 ft (1.5 m)</b>     | 8 ft 1 in (2.46 m)   | 9,200 lb* (4 170 kg)*   | 9,200 lb* (4 170 kg)*   |            |      |                         |                         | 21,300 lb* (9 020 kg)*  | 21,300 lb* (9 020 kg)*  | 20,950 lb* (9 700 kg)*  | 16,400 lb (7 610 kg)   |
| <b>Groundline</b>        | 5 ft 4 in (1.62 m)   | 8,350 lb* (3 790 kg)*   | 8,350 lb* (3 790 kg)*   |            |      |                         |                         | 19,650 lb* (8 640 kg)*  | 19,650 lb* (8 640 kg)*  | 22,800 lb* (10 540 kg)* | 15,500 lb (7 210 kg)   |
| <b>-5 ft (-1.5 m)</b>    | 1 ft 3 in (0.38 m)   | 11,850 lb* (5 300 kg)*  | 11,850 lb* (5 300 kg)*  |            |      | 16,450 lb* (7 430 kg)*  | 16,450 lb* (7 430 kg)*  | 25,100 lb* (11 100 kg)* | 25,100 lb* (11 100 kg)* | 22,900 lb* (10 570 kg)* | 15,250 lb (7 090 kg)   |
| <b>-10 ft (-3 m)</b>     | 1 ft 3 in (0.37 m)   | 18,200 lb* (8 160 kg)*  | 18,200 lb* (8 160 kg)*  |            |      | 22,650 lb* (10 120 kg)* | 22,650 lb* (10 120 kg)* | 32,100 lb* (14 810 kg)* | 30,350 lb (14 140 kg)*  | 21,900 lb* (10 110 kg)* | 15,400 lb (7 160 kg)   |
| <b>-15 ft (-4.5 m)</b>   | 3 ft 8 in (1.06 m)   | 29,200 lb* (12 860 kg)* | 29,200 lb* (12 860 kg)* |            |      | 32,700 lb* (14 500 kg)* | 32,700 lb* (14 500 kg)* | 26,700 lb* (12 430 kg)* | 26,700 lb* (12 430 kg)* | 18,650 lb* (8 700 kg)*  | 15,900 lb* (7 380 kg)* |

| Load (Lift Point Height) | 20 ft (6 m)            |                        | 25 ft (7.5 m)          |                     | 30 ft (9 m)           |                      | MAXIMUM REACH       |                        |                       |
|--------------------------|------------------------|------------------------|------------------------|---------------------|-----------------------|----------------------|---------------------|------------------------|-----------------------|
|                          | END                    | SIDE                   | END                    | SIDE                | END                   | SIDE                 | @                   | END                    | SIDE                  |
| <b>+30 ft (9 m)</b>      | (3 000 kg)*            | (3 000 kg)*            |                        |                     |                       |                      | 19 ft 7 in (6.17 m) | 5,750 lb* (2 550 kg)*  | 5,750 lb* (2 550 kg)* |
| <b>+25 ft (7.5 m)</b>    | 8,900 lb* (4 040 kg)*  | 8,900 lb* (4 040 kg)*  | (2 910 kg)*            | (2 910 kg)*         |                       |                      | 25 ft 0 in (7.71 m) | 5,000 lb* (2 250 kg)*  | 5,000 lb* (2 250 kg)* |
| <b>+20 ft (6 m)</b>      | 9,850 lb* (4 500 kg)*  | 9,850 lb* (4 500 kg)*  | 8,950 lb* (4 090 kg)*  | 8,300 lb (3 880 kg) |                       |                      | 28 ft 3 in (8.66 m) | 4,750 lb* (2 140 kg)*  | 4,750 lb* (2 140 kg)* |
| <b>+15 ft (4.5 m)</b>    | 11,000 lb* (5 070 kg)* | 11,000 lb* (5 070 kg)* | 10,050 lb* (4 690 kg)* | 8,100 lb (3 770 kg) | 5,350 lb* (3 050 kg)* | 5,350 lb* (2 700 kg) | 30 ft 2 in (9.22 m) | 4,700 lb* (2 130 kg)*  | 4,700 lb* (2 130 kg)  |
| <b>+10 ft (3 m)</b>      | 13,250 lb* (6 120 kg)* | 11,200 lb (5 200 kg)   | 11,100 lb* (5 110 kg)* | 7,800 lb (3 620 kg) | 8,000 lb* (4 080 kg)* | 5,650 lb (2 640 kg)  | 31 ft 1 in (9.49 m) | 4,850 lb* (2 210 kg)*  | 4,850 lb* (2 210 kg)  |
| <b>+5 ft (1.5 m)</b>     | 15,200 lb* (7 020 kg)* | 10,600 lb (4 910 kg)   | 12,000 lb* (5 580 kg)  | 7,450 lb (3 460 kg) | 8,800 lb* (4 180 kg)  | 5,500 lb (2 560 kg)  | 31 ft 1 in (9.48 m) | 5,150 lb* (2 340 kg)*  | 5,150 lb (2 330 kg)   |
| <b>Groundline</b>        | 16,450 lb* (7 590 kg)* | 10,100 lb (4 690 kg)   | 11,750 lb (5 470 kg)   | 7,200 lb (3 340 kg) | 6,850 lb* (3 930 kg)* | 5,400 lb (2 510 kg)  | 30 ft 3 in (9.22 m) | 5,750 lb* (2 590 kg)*  | 5,300 lb (2 410 kg)   |
| <b>-5 ft (-1.5 m)</b>    | 16,400 lb (7 640 kg)   | 9,850 lb (4 590 kg)    | 11,650 lb (5 410 kg)   | 7,100 lb (3 290 kg) |                       |                      | 28 ft 6 in (8.69 m) | 6,700 lb* (3 020 kg)*  | 5,850 lb (2 640 kg)   |
| <b>-10 ft (-3 m)</b>     | 16,000 lb* (7 410 kg)* | 10,000 lb (4 630 kg)   | 11,650 lb (5 430 kg)*  | 7,250 lb (3 360 kg) |                       |                      | 25 ft 8 in (7.85 m) | 8,500 lb* (3 790 kg)*  | 6,900 lb (3 120 kg)   |
| <b>-15 ft (-4.5 m)</b>   | 13,050 lb* (6 180 kg)* | 10,400 lb (4 830 kg)   |                        |                     |                       |                      | 21 ft 4 in (6.58 m) | 11,000 lb* (5 000 kg)* | 9,300 lb (4 140 kg)   |

NOTE: \*Lift capacities marked with an asterisk (\*) are limited by 87% hydraulic capacity and 75% tipping capacity.

## STANDARD EQUIPMENT

### OPERATOR ENVIRONMENT

See page 1

### ENGINE

Isuzu four-cylinder turbo-charged diesel  
Tier 4 Certified – Turbocharged, air cooled  
intercooler and SCR system  
Electronic fuel injection  
High pressure common rail system  
Diesel Oxidation Catalyst – DOC  
Neutral safety start  
Auto-engine warm up  
Glow-plug pre-heat  
EPF – Engine Protection Feature  
Dual-stage fuel filtration  
Dual element air filter  
Remote oil filter  
Green plug oil drain  
500-hour engine oil change interval  
24-volt system  
Requires CJ-4 engine oil  
Requires ultra low-sulfur fuel

### FUEL ECONOMY SYSTEMS

Engine Idle/Fuel Economy System:  
Auto-idle  
One-touch idle  
Idle shut-down  
BEC – Boom Economy Control  
AEC – Auto Economy Control  
SWC – Swing Relief Control  
SSC – Spool Stroke Control

### HYDRAULICS

Auto power boost  
Auto swing priority  
Auto travel speed change  
Selectable work modes  
ISO pattern controls  
Pre-set auxiliary pump settings  
Auxiliary valve  
Auxiliary pipe brackets  
Control pattern selector  
5,000-hour hydraulic oil change interval  
1,000-hour hydraulic filter change interval  
SAHR brake

### UPPER STRUCTURE

Right and left side mirrors  
Isolation mounted cab – fluid and spring  
Common key vandal locks  
Upper mounted work light – 70 watt  
Swivel guard belly pan

### UNDERCARRIAGE

31.5 in (800 mm) steel shoes, triple semi-  
grouser  
Full overlap turntable bearing tub  
Single track chain guides  
Hydraulic track adjustment  
X-pattern carbody

### ATTACHMENTS

Boom – 18 ft 8 in (5.70 m)  
Arm – 9 ft 8 in (2.94 m)  
Heavy-duty bucket linkage  
Boom mounted work light – 70 watt  
Auxiliary pipe brackets  
Centralized grease fittings  
Attachment cushion valve  
Arm and boom regeneration

### TELEMATICS

CASE SiteWatch™ Telematics – includes  
hardware and a 3-yr Advanced  
data subscription

## OPTIONAL EQUIPMENT

### OPERATOR ENVIRONMENT

FOPS cab top guard – Level 2  
 Front grill guard – 2 x 2 screen mesh  
 Front rock guard:  
 Vertical bars – two piece/OPG 1  
 Front rock guard:  
 Vertical bars – fixed/one piece/OPG 2  
 Vandal guard  
 Rain deflector  
 Sun visor  
 Side-view camera

### HYDRAULICS

Auxiliary hydraulics:  
 Single acting/joystick activated  
 Double acting/joystick activated  
 Multi-function/joystick activated  
 Secondary low-flow/joystick activated

### MACHINE CONTROL

Leica iCON iXE2 – 2D System  
 Leica iCON iXE3 – 3D System

### UNDERCARRIAGE

23.6 in (600 mm) rubber shoes  
 23.6 in (600 mm) steel shoes, triple semi-grouser  
 27.6 in (700 mm) steel shoes, triple semi-grouser

### ATTACHMENTS

Arm – 7 ft 10 in (2.40 m)  
 Coupler/Case multi-pin grabber  
 Buckets:  
 Heavy-duty  
 Extreme-duty  
 Load holding control  
 Free swing – order kit through Service Parts  
 Hose Burst Check Valve – HBCV

### BUCKETS

| Application        | Width                            | SAE Heaped Capacity  |
|--------------------|----------------------------------|--|
| General Purpose    | 24 in (0.61 m) to 48 in (1.22 m) | 0.65 yd <sup>3</sup> (0.50 m <sup>3</sup> ) to 1.53 yd <sup>3</sup> (1.17 m <sup>3</sup> ) |
| Heavy-duty         | 24 in (0.61 m) to 48 in (1.22 m) | 0.64 yd <sup>3</sup> (0.49 m <sup>3</sup> ) to 1.51 yd <sup>3</sup> (1.15 m <sup>3</sup> ) |
| Extreme-duty       | 24 in (0.61 m) to 42 in (1.07 m) | 0.58 yd <sup>3</sup> (0.44 m <sup>3</sup> ) to 1.19 yd <sup>3</sup> (0.91 m <sup>3</sup> ) |
| Heavy-duty coupler | 24 in (0.61 m) to 39 in (0.99 m) | 0.55 yd <sup>3</sup> (0.42 m <sup>3</sup> ) to 1.03 yd <sup>3</sup> (0.79 m <sup>3</sup> ) |
| Ditching           | 60 in (1.52 m) to 66 in (1.68 m) | 1.08 yd <sup>3</sup> (0.83 m <sup>3</sup> ) to 1.20 yd <sup>3</sup> (0.92 m <sup>3</sup> ) |

**CaseCE.com**

©2021 CNH Industrial America LLC. All rights reserved. CASE is a trademark registered in the United States and many other countries, owned by or licensed to CNH Industrial N.V., its subsidiaries or affiliates. CNH Industrial Capital is a trademark in the United States and many other countries, owned by or licensed to CNH Industrial N.V., its subsidiaries or affiliates. Printed in U.S.A. Contains 10% post-consumer fiber.

IMPORTANT: CASE Construction Equipment Inc. reserves the right to change these specifications without notice and without incurring any obligation relating to such change. Availability of some models and equipment builds vary according to the country in which the equipment is used. The illustrations and text may include optional equipment and accessories and may not include all standard equipment. Your CASE dealer/distributor will be able to give you details of the products and their specifications available in your area.



CASE Construction Equipment is biodiesel-friendly. NOTE: All engines meet current EPA emissions regulations. All specifications are stated in accordance with SAE Standards or Recommended Practices, where applicable.



Always read the Operator's Manual before operating any equipment. Inspect equipment before using it, and be sure it is operating properly. Follow the product safety signs and use any safety features provided.

Form No. CCE202106CX245DSR  
 Replaces Form No. CCE201701CX245DSR

**CX245D SR**

**7 of 7**