

## ENGINE

Model	Isuzu AQ-6HK1X
Emissions Certification	Tier 4 Final
Fuel	Requires ultra-low sulfur fuel B5 biodiesel tolerant
Type	Water-cooled, 4-cycle diesel, 6-cylinder in-line high pressure common rail system – electric control, VGT Turbocharger w/ air cooled intercooler, ATS
Cylinders	6-cylinder in-line
Displacement	475 in <sup>3</sup> (7.8 L)
Bore/Stroke	4.53 x 4.92 in (115 x 125 mm)
Fuel injection	High pressure common rail system – electronic
Fuel filter	Replaceable, full flow spin-on cartridge
Air filter	Dry type dual element w/ warning restriction indicator
Oil filter	Replaceable, full flow spin-on cartridge
Engine gradeability:	
Side-to-side	35°
Fore and aft	35°
Net horsepower – SAE J1349 @ 1800 RPM:	205 hp (153 kW)
Net max. torque – SAE J1349 @ 1500 RPM:	626 lbf-ft (849 N-m)
Cooling operating range:	122° to -4°F (50° to -20°C)
Oil	Requires low-ash oil CJ-4

## DRIVETRAIN

Travel control	Dual stage relief/ counter balance design
Brakes	Mechanical disc
Two speed travel:	
Max. high speed	2.9 mph (4.7 km/h)
Max. low speed	1.7 mph (2.8 km/h)
Automatic downshift	
Drawbar pull	59,300 lbf (264 kN)
Gradeability	70% – 35° Slope

## ELECTRICAL

Voltage	24 Volts
Alternator rating	90 amp
Batteries	2 x 12 Volt
Battery reserve capacity	128 Ah/5 hour
Work lights – 4	24 Volt/70 watt
1 boom, 1 upper, 2 cab	

## OPERATOR ENVIRONMENT

Air conditioner output	18,100 BTU/hr
Heater output	20,150 BTU/hr
Sound level inside cab – ISO6395	71 dBA
Electrical outlet	12 Volt
Cab interior light	10 watt
Rear and side view cameras	

### Operator's Cab:

Smooth and round shape design cab; Safety glass for all windows; Shock-less cab suspension by 4-point fluid mounting; Sliding front window w/ auto lock; 10" Full-color LCD monitor display; Membrane switch on monitor display; Switch panel (including throttle dial w/ eco-mode switch); Windshield wiper & washer; AM/FM/Bluetooth Radio w/ hands-free phone; Sectioned floor mat; Polycarbonate roof hatch & Sun shade; Auto air conditioner; Roll-over protective structure (ROPS); Top guard OPG level 1 (in cab structure).

### Seat:

Low frequency air suspension w/ air springs and double acting hydraulic damper; Manual weight adjustment; Backrest angle adjustment; Seat height adjustment; Adjustable armrest (Angle and height); Adjustable headrest; Retractable seat belt; Adjustable lumbar support; Console mount on suspension; Control consoles adjust independently of seat.

## ATTACHMENT

Boom	20 ft 2 in (6.15 m)
HD Boom	20 ft 2 in (6.15 m)
Arm options:	
Standard	10 ft 5 in (3.18 m)
Short	8 ft 8 in (2.65 m)
Long	12 ft 0 in (3.66 m)
Bucket digging force*	39,340 lbf (175 kN)
w/ Auto Power-Boost	42,780 lbf (190.3 kN)

NOTE: \*Digging force ratings based on ISO6015.

## OPERATING WEIGHT

Operating weight	78,600 lb (35 700 kg)
w/ shoes	2 ft 7 in (800 mm)
w/ boom	20 ft 2 in (6.15 m)
w/ arm	10 ft 5 in (3.18 m)
w/ bucket	2,050 lb (930 kg)
w/ counterweight	17,500 lb (7 950 kg)

NOTE: W/ operator/full fuel/standard equipment.

## GROUND PRESSURE

@ Standard operating weight 7.25 psi (0.5 bar)  
w/ 31.5 in (800 mm) triple semi-grouser shoes

## HYDRAULICS

System design	Open center
Main pumps	Two-variable displacement axial piston pump w/ regulating system
Max. rated flow x 2	64.2 gpm (243 L/min) @ 1,800 RPM
System pressures:	
Boom, arm and bucket	4,970 psi (343 bar)
w/ Power Boost	5,410 psi (373 bar)
Travel circuits	4,970 psi (343 bar)
Swing circuits	4,410 psi (304 bar)
Pilot pump	1 x gear design
Max. capacity	7.1 gpm (27 L/min)
Pilot system working pressure:	570 psi (39 bar, 40 kgf/cm <sup>2</sup> )
Control valve w/ boom/arm holding valve:	
Right track travel, bucket, boom and arm acceleration.	1 x Four-spool section
Left track travel, auxiliary, swing, boom and arm acceleration.	1 x Five-spool section
Work mode selections	SP – Mode Power – Mode Eco – Mode Lift – Mode

Swing motor	Fixed displacement axial piston
Swing brake	Mechanical disc brake
Turn table bearing	Ball bearing type w/ internal gear
Swing final drive	Planetary gear reduction
Travel motor	Two-speed independent travel/axial piston

## HYDRAULIC CYLINDERS

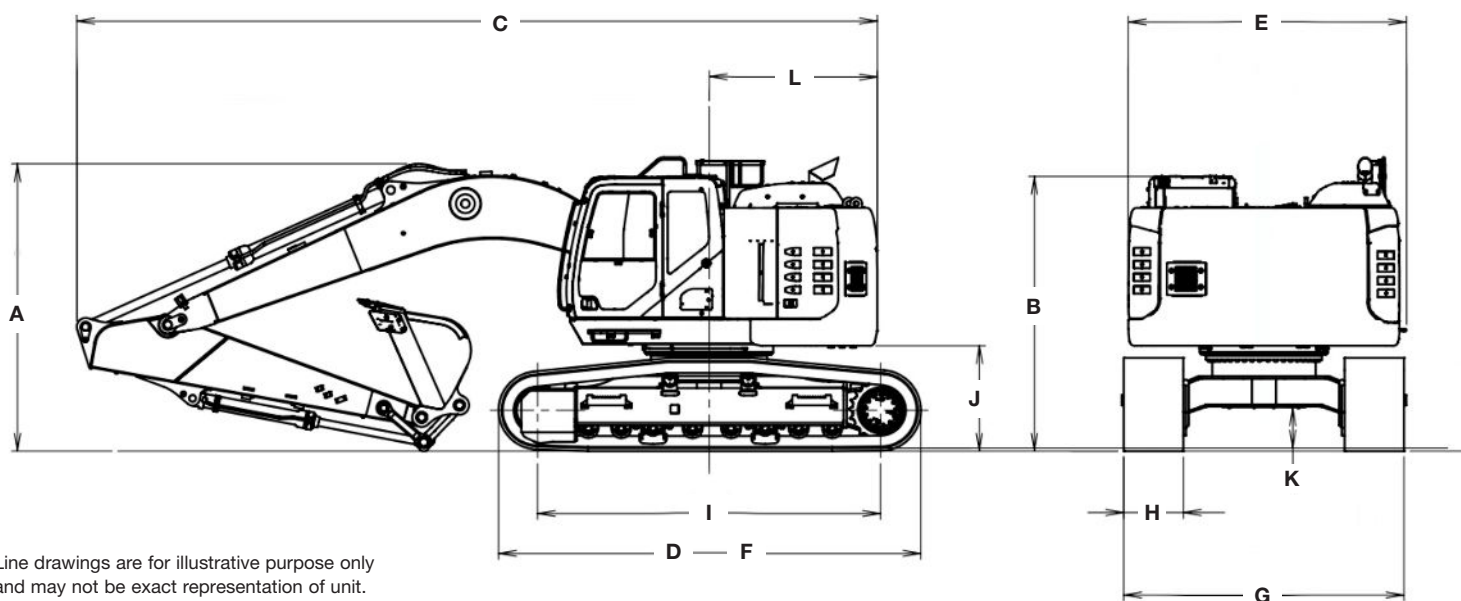
Boom cylinders	Two (2)
Cylinder bore	5.5 in (140 mm)
Cylinder rod diameter	3.74 in (95 mm)
Cylinder stroke	57.52 in (1 461 mm)
Arm cylinder	One (1)
Cylinder bore	5.9 in (150 mm)
Cylinder rod diameter	4.13 in (105 mm)
Cylinder stroke	64.9 in (1 650 mm)
Bucket cylinder	One (1)
Cylinder bore	5.31 in (135 mm)
Cylinder rod diameter	3.54 in (90 mm)
Cylinder stroke	42.4 in (1 078 mm)

## SERVICE CAPACITIES

Fuel tank	100 gal (379 L)
Hydraulic system	96 gal (363 L)
Hydraulic tank	43 gal (164 L)
Engine oil w/ filter	10.8 gal (40.9 L)
Swing drive	1.3 gal (5 L)
Final drive	2.5 gal (9.5 L)
Cooling system	11.6 gal (43.8 L)
DEF Tank	11.4 gal (43 L)

## OTHER SPECIFICATIONS

Swing speed	10.2 RPM
Swing torque	67,900 lbf-ft (92.1 kN-m)
Swing brake	Mechanical disc
Undercarriage:	
Length	16 ft 4 in (4 980 mm)
Track gauge	8 ft 6 in (2 600 mm)
Carrier rollers	2
Track rollers	8
Shoes – triple grouser	48
Shoe width – std.	2 ft 7 in (800 mm)
Link pitch	8.5 in (216 mm)
Track:	
Chain	Grease lubricated/strutted
Guides	Double
Adjustment	Hydraulic

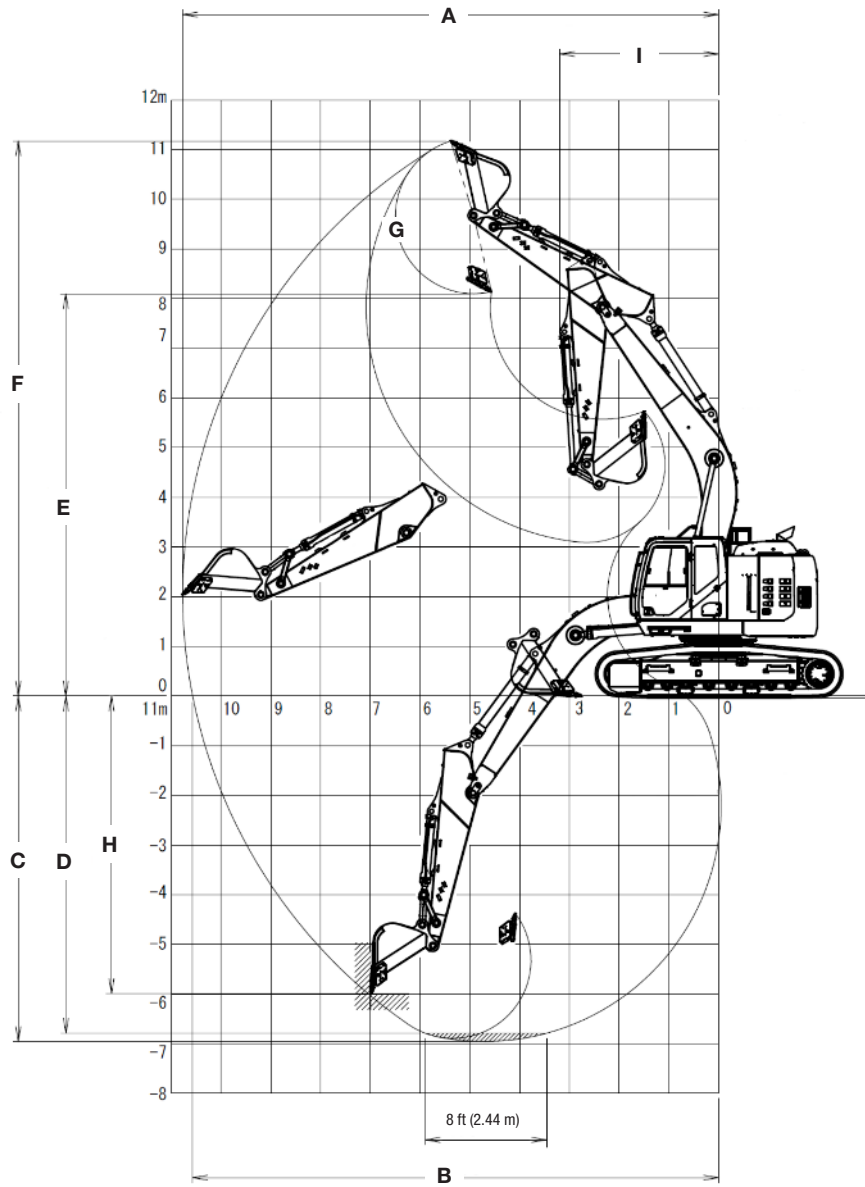


Line drawings are for illustrative purpose only and may not be exact representation of unit.

## DIMENSIONS

	10 ft 5 in (3.18 m) Arm	8 ft 8 in (2.65 m) Arm	12 ft 0 in (3.66 m) Arm
<b>A.</b> Overall height – with attachment	11 ft 1 in (3 380 mm)	10 ft 11 in (3 320 mm)	11 ft 2 in (3 400 mm)
<b>B.</b> Cab height	10 ft 8 in (3 250 mm)	10 ft 8 in (3 250 mm)	10 ft 8 in (3 250 mm)
Overall height to top of guardrail	11 ft 4 in (3 450 mm)	11 ft 4 in (3 450 mm)	11 ft 4 in (3 450 mm)
<b>C.</b> Overall length – with attachment	32 ft 7 in (9 930 mm)	32 ft 8 in (9 950 mm)	32 ft 7 in (9 930 mm)
<b>D.</b> Overall length – without attachment	16 ft 4 in (4 980 mm)	16 ft 4 in (4 980 mm)	16 ft 4 in (4 980 mm)
<b>E.</b> Width of upper structure	10 ft 9 in (3 280 mm)	10 ft 9 in (3 280 mm)	10 ft 9 in (3 280 mm)
Width of upper structure with catwalks	11 ft 9 in (3 590 mm)	11 ft 9 in (3 590 mm)	11 ft 9 in (3 590 mm)
<b>F.</b> Track overall length	16 ft 4 in (4 980 mm)	16 ft 4 in (4 980 mm)	16 ft 4 in (4 980 mm)
<b>G.</b> Track overall width – with 31.5 in (800 mm) shoes	11 ft 2 in (3 400 mm)	11 ft 2 in (3 400 mm)	11 ft 2 in (3 400 mm)
<b>H.</b> Track shoe width	2 ft 7 in (800 mm)	2 ft 7 in (800 mm)	2 ft 7 in (800 mm)
<b>I.</b> Center to center – idler to sprocket	13 ft 3 in (4 040 mm)	13 ft 3 in (4 040 mm)	13 ft 3 in (4 040 mm)
<b>J.</b> Upper structure ground clearance	3 ft 11 in (1 200 mm)	3 ft 11 in (1 200 mm)	3 ft 11 in (1 200 mm)
<b>K.</b> Minimum ground clearance	1 ft 7 in (470 mm)	1 ft 7 in (470 mm)	1 ft 7 in (470 mm)
<b>L.</b> Rear tail swing radius	6 ft 6 in (1 980 mm)	6 ft 6 in (1 980 mm)	6 ft 6 in (1 980 mm)
Operating weight*	82,483 lb (37 414 kg)	82,373 lb (37 364 kg)	83,144 lb (37 714 kg)
Ground pressure	7.25 psi (0.5 bar)	7.25 psi (0.5 bar)	7.25 psi (0.5 bar)

NOTE: \*With 20 ft 2 in (6.15 m) boom, 31.5 in (800 mm) track shoe, 2,050 lb (930 kg) bucket, 165 lb (75 kg) operator, full fuel and standard equipment.



## PERFORMANCE SPECS

	10 ft 5 in (3.18 m) Arm	8 ft 8 in (2.65 m) Arm	12 ft 0 in (3.66 m) Arm
A. Maximum dig radius	35 ft 4 in (10 770 mm)	33 ft 10 in (10 320 mm)	36 ft 11 in (11 260 mm)
B. Dig radius at groundline	34 ft 8 in (10 570 mm)	33 ft 2 in (10 110 mm)	36 ft 4 in (11 070 mm)
C. Maximum dig depth	22 ft 10 in (6 950 mm)	21 ft 1 in (6 420 mm)	24 ft 5 in (7 440 mm)
D. Dig depth – 8 ft 0 in (2.44 m) level bottom	22 ft 3 in (6 790 mm)	20 ft 6 in (6 240 mm)	23 ft 11 in (7 290 mm)
E. Dump height	26 ft 7 in (8 100 mm)	25 ft 10 in (7 870 mm)	27 ft 10 in (8 470 mm)
F. Maximum reach height	36 ft 8 in (11 170 mm)	35 ft 11 ft (10 950 mm)	37 ft 11 in (11 560 mm)
G. Bucket rotation	176°	176°	176°
H. Maximum vertical wall dig depth	19 ft 8 in (5 990 mm)	18 ft 6 in (5 640 mm)	21 ft 8 in (6 600 mm)
I. Minimum swing radius	10 ft 6 in (3 190 mm)	10 ft 3 in (3 120 mm)	10 ft 6 in (3 200 mm)
Arm digging force:			
Standard	28,870 lbf (128.4 kN)	33,050 lbf (147 kN)	25,700 lbf (114.3 kN)
Power Boost	31,380 lbf (139.6 kN)	35,950 lbf (159.9 kN)	27,940 lbf (124.3 kN)
Bucket digging force:			
Standard	39,340 lbf (175 kN)	39,340 lbf (175 kN)	39,340 lbf (175 kN)
Power Boost	42,780 lbf (190.3 kN)	42,780 lbf (190.3 kN)	42,780 lbf (190.3 kN)

NOTE: \*Machine equipped with 20 ft 2 in (6.15 m) boom.

# LIFT CAPACITIES

**10 ft 5 in (3.18 m) Arm** Lift capacities calculated using a 2,050 lb (930 kg) bucket, 17,690 lb (8 020 kg) counterweight.

Load (Lift Point) Height	MINIMUM REACH			5 ft (1.5 m)		10 ft (3 m)		15 ft (4.5 m)		20 ft (6 m)		25 ft (7.5 m)		30 ft (9 m)		MAXIMUM REACH		
	@	END	SIDE	END	SIDE	END	SIDE	END	SIDE	END	SIDE	END	SIDE	END	SIDE	@	END	SIDE
<b>+30 ft (9 m)</b>	17 ft 2 in (5.29 m)	17,400 lb* (7 870 kg)*	17,400 lb* (7 870 kg)*													18 ft 8 in (5.87 m)	14,700 lb* (6 560 kg)*	14,700 lb* (6 560 kg)*
<b>+25 ft (7.5 m)</b>	18 ft 1 in (5.5 m)	16,500 lb* (7 510 kg)*	16,500 lb* (7 510 kg)*							16,650 lb* (7 540 kg)*	16,650 lb* (7 540 kg)*					23 ft 9 in (7.34 m)	13,100 lb* (5 920 kg)*	13,100 lb* (5 920 kg)*
<b>+20 ft (6 m)</b>	16 ft 5 in (4.94 m)	18,300 lb* (8 420 kg)*	18,300 lb* (8 420 kg)*							17,500 lb* (8 020 kg)*	17,500 lb* (8 020 kg)*	16,950 lb* (7 710 kg)*	13,350 lb (6 210 kg)			27 ft 0 in (8.27 m)	12,600 lb* (5 700 kg)*	11,750 lb (5 270 kg)
<b>+15 ft (4.5 m)</b>	9 ft 0 in (2.82 m)	37,200 lb* (16 930 kg)*	37,200 lb* (16 930 kg)*			33,500 lb* (15 840 kg)*	33,500 lb* (15 840 kg)*	23,900 lb* (11 110 kg)*	23,900 lb* (11 110 kg)*	19,900 lb* (9 180 kg)*	18,300 lb (8 490 kg)	17,900 lb* (8 210 kg)*	13,050 lb (6 060 kg)			29 ft 0 in (8.85 m)	12,600 lb* (5 730 kg)*	10,350 lb (4 660 kg)
<b>+10 ft (3 m)</b>	12 ft 0 in (3.67 m)	34,850 lb* (15 340 kg)*	34,850 lb* (15 340 kg)*					30,750 lb* (14 310 kg)*	26,450 lb (12 260 kg)	23,100 lb* (10 680 kg)*	17,400 lb (8 070 kg)	19,450 lb* (8 950 kg)*	12,600 lb (5 850 kg)	(7 000 kg)*	(4 460 kg)	30 ft 0 in (9.15 m)	13,050 lb* (5 930 kg)*	9,600 lb (4 350 kg)
<b>+5 ft (1.5 m)</b>	12 ft 4 in (3.76 m)	18,850 lb* (8 490 kg)*	18,850 lb* (8 490 kg)*					36,250 lb* (16 800 kg)*	24,850 lb (11 520 kg)	26,050 lb* (12 040 kg)*	16,600 lb (7 700 kg)	19,850 lb (9 220 kg)	12,200 lb (5 650 kg)	14,800 lb* (7 050 kg)	9,400 lb (4 370 kg)	30 ft 2 in (9.18 m)	14,000 lb* (6 370 kg)*	9,350 lb (4 240 kg)
<b>Groundline</b>	10 ft 5 in (3.16 m)	14,500 lb* (6 580 kg)*	14,500 lb* (6 580 kg)*					38,400 lb* (17 740 kg)*	24,100 lb (11 180 kg)	27,200 lb (12 640 kg)	16,050 lb (7 450 kg)	19,500 lb (9 050 kg)	11,850 lb (5 500 kg)			29 ft 5 in (8.96 m)	15,500 lb (7 030 kg)	9,550 lb (4 330 kg)
<b>-5 ft (-1.5 m)</b>	5 ft 3 in (1.6 m)	17,200 lb* (7 710 kg)*	17,200 lb* (7 710 kg)*			25,600 lb* (11 300 kg)*	25,600 lb* (11 300 kg)*	37,800 lb* (17 440 kg)*	23,900 lb (11 100 kg)	26,900 lb (12 510 kg)	15,850 lb (7 340 kg)	19,350 lb (8 980 kg)	11,750 lb (5 430 kg)			27 ft 9 in (8.47 m)	16,750 lb (7 580 kg)	10,250 lb (4 640 kg)
<b>-10 ft (-3 m)</b>	5 ft 4 in (1.62 m)	29,850 lb* (13 320 kg)*	29,850 lb* (13 320 kg)*			41,150 lb* (18 120 kg)*	41,150 lb* (18 120 kg)*	34,800 lb* (16 070 kg)*	24,050 lb (11 180 kg)	26,200 lb* (12 130 kg)*	15,900 lb (7 360 kg)	(9 030 kg)	(5 480 kg)			25 ft 0 in (7.64 m)	19,550 lb (8 800 kg)	11,900 lb (5 360 kg)
<b>-15 ft (-4.5 m)</b>	8 ft 6 in (2.5 m)	42,600 lb* (20 000 kg)*	42,600 lb* (20 000 kg)*			38,400 lb* (17 870 kg)*	38,400 lb* (17 870 kg)*	28,450 lb* (13 270 kg)*	24,600 lb (11 420 kg)	20,650 lb* (9 780 kg)*	16,350 lb (7 560 kg)					20 ft 7 in (6.36 m)	19,650 lb* (8 910 kg)*	15,750 lb (7 010 kg)

**8 ft 8 in (2.65 m) Arm** Lift capacities calculated using a 2,050 lb (930 kg) bucket, 17,690 lb (8 020 kg) counterweight.

Load (Lift Point) Height	MINIMUM REACH			5 ft (1.5 m)		10 ft (3 m)		15 ft (4.5 m)		20 ft (6 m)		25 ft (7.5 m)		30 ft (9 m)		MAXIMUM REACH		
	@	END	SIDE	END	SIDE	END	SIDE	END	SIDE	END	SIDE	END	SIDE	END	SIDE	@	END	SIDE
<b>+30 ft (9 m)</b>	15 ft 2 in (4.71 m)	20,350 lb* (9 060 kg)*	20,350 lb* (9 060 kg)*													16 ft 1 in (5.13 m)	19,600 lb* (8 700 kg)*	19,600 lb* (8 700 kg)*
<b>+25 ft (7.5 m)</b>	16 ft 4 in (4.96 m)	18,700 lb* (8 510 kg)*	18,700 lb* (8 510 kg)*							18,650 lb* (8 430 kg)*	18,650 lb* (8 430 kg)*					21 ft 10 in (7.64 m)	16,950 lb* (7 650 kg)*	16,450 lb (7 280 kg)
<b>+20 ft (6 m)</b>	14 ft 3 in (4.25 m)	21,650 lb* (10 030 kg)*	21,650 lb* (10 030 kg)*					21,200 lb* (9 800 kg)*	21,200 lb* (9 800 kg)*	19,200 lb* (8 810 kg)*	18,800 lb (8 730 kg)	17,700 lb* (8 400 kg)*	13,200 lb (6 150 kg)			25 ft 4 in (7.77 m)	16,100 lb* (7 300 kg)*	12,950 lb (5 800 kg)
<b>+15 ft (4.5 m)</b>	11 ft 3 in (3.5 m)	35,200 lb* (15 990 kg)*	35,200 lb* (15 990 kg)*					26,600 lb* (12 370 kg)*	26,600 lb* (12 370 kg)*	21,500 lb* (9 920 kg)*	18,150 lb (8 410 kg)	19,150 lb* (8 760 kg)*	13,000 lb (6 040 kg)			27 ft 5 in (8.39 m)	16,050 lb* (7 300 kg)*	11,250 lb (5 080 kg)
<b>+10 ft (3 m)</b>	13 ft 9 in (4.21 m)	37,300 lb* (16 960 kg)*	29,450 lb (13 270 kg)					33,350 lb* (15 520 kg)*	26,050 lb (12 050 kg)	24,500 lb* (11 330 kg)*	17,350 lb (8 020 kg)	20,350 lb (9 410 kg)*	12,650 lb (5 860 kg)			28 ft 6 in (8.69 m)	16,650 lb* (7 550 kg)*	10,400 lb (4 720 kg)
<b>+5 ft (1.5 m)</b>	14 ft 1 in (4.29 m)	25,150 lb* (11 330 kg)*	25,150 lb* (11 330 kg)*					37,850 lb* (15 540 kg)*	24,700 lb (11 460 kg)	27,100 lb* (12 520 kg)*	16,600 lb (7 690 kg)	19,900 lb (9 240 kg)	12,250 lb (5 680 kg)			28 ft 8 in (8.73 m)	16,350 lb (7 410 kg)	10,150 lb (4 600 kg)
<b>Groundline</b>	12 ft 5 in (3.78 m)	19,600 lb* (8 880 kg)*	19,600 lb* (8 880 kg)*					38,750 lb* (17 680 kg)*	24,200 lb (11 250 kg)	27,300 lb (12 680 kg)	16,200 lb (7 500 kg)	19,650 lb (9 110 kg)	12,000 lb (5 560 kg)			27 ft 11 in (8.5 m)	16,850 lb (7 640 kg)	10,400 lb (4 720 kg)
<b>-5 ft (-1.5 m)</b>	7 ft 4 in (2.27 m)	18,800 lb* (8 500 kg)*	18,800 lb* (8 500 kg)*			25,850 lb* (11 350 kg)*	25,850 lb* (11 350 kg)*	37,150 lb* (17 110 kg)*	24,200 lb (11 240 kg)	27,150 lb (12 610 kg)	16,050 lb (7 440 kg)	19,600 lb (9 080 kg)	11,950 lb (5 530 kg)			26 ft 2 in (7.98 m)	18,450 lb (8 340 kg)	11,300 lb (5 120 kg)
<b>-10 ft (-3 m)</b>	7 ft 2 in (2.18 m)	37,450 lb* (16 650 kg)*	37,450 lb* (16 650 kg)*			44,050 lb* (20 280 kg)*	44,050 lb* (20 280 kg)*	33,150 lb* (15 320 kg)*	24,500 lb (11 370 kg)	25,150 lb* (11 660 kg)*	16,200 lb (7 510 kg)					23 ft 2 in (7.09 m)	20,550 lb* (9 310 kg)*	13,400 lb (6 040 kg)
<b>-15 ft (-4.5 m)</b>	11 ft 6 in (3.38 m)	30,350 lb* (14 370 kg)*	30,350 lb* (14 370 kg)*					25,050 lb* (11 780 kg)*	25,050 lb* (11 690 kg)							18 ft 4 in (5.68 m)	19,600 lb* (8 930 kg)*	18,950 lb (8 390 kg)

NOTE: \*Lift capacities do not exceed 75% of the minimum tipping load or 87% of the hydraulic lift capacity. Capacities that are marked with an asterisk are hydraulic limited.

## LIFT CAPACITIES

**12 ft 0 in (3.66 m) Arm** Lift capacities calculated using a 2,050 lb (930 kg) bucket, 17,690 lb (8 020 kg) counterweight.

Load (Lift Point) Height	MINIMUM REACH			5 ft (1.5 m)		10 ft (3 m)		15 ft (4.5 m)		20 ft (6 m)		25 ft (7.5 m)		30 ft (9 m)		MAXIMUM REACH		
	@	END	SIDE	END	SIDE	END	SIDE	END	SIDE	END	SIDE	END	SIDE	END	SIDE	@	END	SIDE
<b>+30 ft (9 m)</b>	18 ft 10 in (5.8 m)	14,950 lb* (6 840 kg)*	14,950 lb* (6 840 kg)*							13,800 lb* (6 610 kg)*	13,800 lb* (6 610 kg)*					21 ft 2 in (6.62 m)	11,650 lb* (5 220 kg)*	11,650 lb* (5 220 kg)*
<b>+25 ft (7.5 m)</b>	19 ft 8 in (5.98 m)	14,850 lb* (6 750 kg)*	14,850 lb* (6 750 kg)*							14,900 lb* (6 750 kg)*	14,900 lb* (6 750 kg)*	12,350 lb* (6 080 kg)*	12,350 lb* (6 080 kg)*			25 ft 9 in (7.94 m)	10,550 lb* (4 750 kg)*	10,550 lb* (4 750 kg)*
<b>+20 ft (6 m)</b>	18 ft 3 in (5.51 m)	16,050 lb* (7 370 kg)*	16,050 lb* (7 370 kg)*							15,900 lb* (7 290 kg)*	15,900 lb* (7 290 kg)*	15,600 lb* (7 110 kg)*	13,450 lb (6 250 kg)			28 ft 9 in (8.81 m)	10,100 lb* (4 570 kg)*	10,100 lb* (4 570 kg)*
<b>+15 ft (4.5 m)</b>	13 ft 2 in (3.86 m)	21,850 lb* (10 410 kg)*	21,850 lb* (10 410 kg)*					21,350 lb* (9 920 kg)*	21,350 lb* (9 920 kg)*	18,400 lb* (8 470 kg)*	18,400 lb* (8 470 kg)*	16,750 lb* (7 680 kg)*	13,100 lb (6 080 kg)	12,150 lb* (6 130 kg)*	9,750 lb (4 540 kg)	30 ft 8 in (9.36 m)	10,050 lb* (4 570 kg)*	9,400 lb (4 250 kg)
<b>+10 ft (3 m)</b>	10 ft 8 in (3.27 m)	35,050 lb* (15 200 kg)*	35,050 lb* (15 200 kg)*					28,300 lb* (13 150 kg)*	26,850 lb (12 440 kg)	21,700 lb* (10 030 kg)*	17,500 lb (8 120 kg)	18,450 lb* (8 490 kg)*	12,600 lb (5 850 kg)	15,350 lb (7 140 kg)	9,550 lb (4 440 kg)	31 ft 7 in (9.64 m)	10,350 lb* (4 700 kg)*	8,800 lb (3 980 kg)
<b>+5 ft (1.5 m)</b>	11 ft 1 in (3.38 m)	15,200 lb* (6 850 kg)*	15,200 lb* (6 850 kg)*					34,450 lb* (15 980 kg)*	25,000 lb (11 590 kg)	24,950 lb* (11 520 kg)*	16,600 lb (7 700 kg)	19,800 lb (9 200 kg)	12,100 lb (5 620 kg)	15,100 lb (7 010 kg)	9,300 lb (4 320 kg)	31 ft 9 in (9.67 m)	11,000 lb* (5 000 kg)*	8,550 lb (3 880 kg)
<b>Groundline</b>	8 ft 10 in (2.68 m)	11,050 lb* (5 010 kg)*	11,050 lb* (5 010 kg)*			14,550 lb* (6 370 kg)*	14,550 lb* (6 370 kg)*	37,650 lb* (17 400 kg)*	23,950 lb (11 120 kg)	27,100 lb (12 530 kg)*	15,950 lb (7 400 kg)	19,400 lb (9 000 kg)	11,750 lb (5 440 kg)	14,900 lb (6 910 kg)	9,100 lb (4 230 kg)	31 ft 0 in (9.46 m)	12,100 lb* (5 490 kg)*	8,700 lb (3 950 kg)
<b>-5 ft (-1.5 m)</b>	3 ft 8 in (1.11 m)	14,700 lb* (6 610 kg)*	14,700 lb* (6 610 kg)*	15,300 lb* (6 840 kg)*	15,300 lb* (6 840 kg)*	23,700 lb* (10 460 kg)*	23,700 lb* (10 460 kg)*	37,950 lb* (17 520 kg)*	23,600 lb (10 960 kg)	26,700 lb (12 420 kg)	15,600 lb (7 240 kg)	19,150 lb (8 890 kg)	11,500 lb (5 340 kg)			29 ft 6 in (9 m)	13,950 lb* (6 310 kg)*	9,250 lb (4 200 kg)
<b>-10 ft (-3 m)</b>	3 ft 9 in (1.13 m)	24,100 lb* (10 770 kg)*	24,100 lb* (10 770 kg)*	25,200 lb* (11 250 kg)*	25,200 lb* (11 250 kg)*	35,900 lb* (15 820 kg)*	35,900 lb* (15 820 kg)*	35,800 lb* (16 550 kg)*	23,650 lb (10 990 kg)	26,650 lb (12 370 kg)*	15,600 lb (7 220 kg)	19,150 lb (8 890 kg)	11,550 lb (5 340 kg)			26 ft 11 in (8.23 m)	17,350 lb (7 820 kg)*	10,550 lb (4 760 kg)
<b>-15 ft (-4.5 m)</b>	6 ft 3 in (1.85 m)	40,350 lb* (17 750 kg)*	40,350 lb* (17 750 kg)*			42,700 lb* (19 830 kg)*	42,700 lb* (19 830 kg)*	30,700 lb* (14 290 kg)*	24,100 lb (11 180 kg)	22,800 lb* (10 680 kg)*	15,900 lb (7 360 kg)					22 ft 11 in (7.05 m)	18,600 lb* (8 430 kg)*	13,300 lb (5 950 kg)

NOTE: \*Lift capacities do not exceed 75% of the minimum tipping load or 87% of the hydraulic lift capacity. Capacities that are marked with an asterisk are hydraulic limited.

## STANDARD EQUIPMENT - PRELIMINARY

### ENGINE

Isuzu AQ-6HK1X  
Tier 4 Final Certified  
Selective Catalytic Reduction – SCR  
Diesel Oxidation Catalyst – DOC  
Cooled Exhaust Gas Recirculation – CEGR  
EGR Coolers  
Six-cylinder turbo-charged diesel  
VGT turbocharger  
Electronic fuel injection  
High pressure common rail system  
Neutral safety start  
Auto-engine warm up  
Glow-plug pre-heat  
Fuel Economy Assist System – FEA  
Engine Protection Feature – EPF  
Dual-stage fuel filtration  
Dual element air filter  
Remote oil filter  
Drain for fuel tank  
Remote engine oil drain  
500-hour engine oil change interval  
24-volt system  
Engine oil sample port  
Battery disconnect switch  
Air pre-cleaner – Cyclone  
High ambient temperature cooling package  
Emergency engine stop  
External Fuel and DEF gauges  
Fan housing  
Fuel cooler  
Fuel filter restriction indicator  
Fuel shut-off valve  
Radiator, oil cooler,  
intercooler – protective chaff screen

### FUEL ECONOMY SYSTEMS

Engine Idle/Fuel Economy System:  
Auto-idle  
One-touch idle  
Timed engine shut down  
BEC – Boom Economy Control  
AEC – Auto Economy Control  
SWC – Swing Relief Control  
SSC – Spool Stroke Control

### HYDRAULICS

Boom/Arm/Bucket/Swing:  
Pilot pressure control system  
(ISO or SAE control pattern)  
Work mode select:  
1 SP – mode  
2 Power – mode  
3 Eco – mode  
4 Lift – mode  
Travel mode select – 2-speed travel with  
auto downshift  
Attachment cushion control  
Hydraulic lock – gate lock, left side tilt console  
Single pedal travel  
Custom flow balance adjustment:  
Arm in vs. boom up  
Arm in vs. swing

Multi-function with electronic pressure  
and flow control/joystick activated  
with electronic configurable  
proportional controls

### UPPER STRUCTURE

ISO mirrors – 3  
Cab ISO-Mounts – fluid and spring  
Upper mounted work light – 70 watt  
Swivel guard belly pan  
Center cover – over main CV  
Fuel tank belly pan  
Handrail – RH access  
ISO guard rails  
Lifting eyes for counterweight  
Lockable fuel cap, service doors and tool box

### ATTACHMENTS

Boom – 20 ft 2 in (6.15 m)  
Arm – 10 ft 5 in (3.18 m)  
Heavy-duty bucket linkage  
Boom mounted work light – 70 watt  
Auxiliary pipe brackets  
Centralized grease fittings  
Attachment cushion valve  
Arm and boom regeneration  
Bucket anti-clatter device  
Chrome pins  
Easy Maintenance System (EMS) bushings  
Teardrop pin retention keepers

### OPERATOR ENVIRONMENT

Operators cab:  
Smooth and round shape design cab,  
fabricated by press work  
Safety glass for all windows  
Shock-less cab suspension by 4-point  
fluid mounting  
Sliding front window with auto lock  
10 in Full-color LCD monitor display  
Membrane switch on monitor display  
with 5 configurable button on bottom  
of monitor  
Switch panel – including throttle dial with  
eco-mode switch  
Windshield wiper & washer  
AM/FM/Bluetooth Radio with  
hands-free phone  
Sectioned floor mat  
Polycarbonate roof hatch & Sun shade  
Auto climate control  
Roll-over protective structure – ROPS  
Top guard OPG level 1 – in cab structure

Operator's seat:  
Low frequency air suspension with  
air springs and double acting  
hydraulic damper  
With following features:  
Manual weight adjustment  
Backrest angle adjustment  
Seat height adjustment  
Adjustable armrest – Angle and height  
Adjustable headrest  
Retractable seat belt  
Adjustable lumbar support  
Console mount on suspension  
Control consoles adjust  
independently of seat

Others:

Rear view mirror – Cab side & Right side  
Rear & Right-side view Camera

### UNDERCARRIAGE

Travel motor	Variable displacement axial piston motor
Brake	Mechanical disc brake
Hydraulic service brake	Brake valve
Final drive	Planetary gear reduction
Travel speeds:	
High	2.9 mph (4.7 km/h) (Automatic travel speed downshifting)
Low	1.7 mph (2.8 km/h)
Drawbar pull	59,300 lbf (264 kN)
Number of carrier rollers	2 - each side
Number of track rollers	8 - each side
Number of shoes	48 - each side
Type of shoe	Triple semi-grouser shoe
Link pitch	8.50 in (216 mm)
Width of shoe	31.5 in (800 mm) S.T.D
Grade-ability	70% (35°)

### TELEMATICS

CASE SiteWatch™ Telematics – includes  
hardware and a 3-yr Advanced  
data subscription for 2-way communication  
Remote diagnostics with the CASE  
SiteManager App

## OPTIONAL EQUIPMENT

### ENGINE

Refueling pump  
Air pre-cleaner – Cyclone  
High ambient temperature cooling package

### HYDRAULICS

Auxiliary hydraulics:  
Proportionally controlled secondary  
low-flow auxiliary hydraulics  
Hose Burst Check Valve – HBCV

### MACHINE CONTROL

Leica iCON iXE2 – 2D System  
Leica iCON iXE3 – 3D System

### ATTACHMENTS

Short arm – 8 ft 8 in (2.65 m)  
Long arm – 12 ft 0 in (3.66 m)  
Quick coupler/Case multi-pin grabber  
Tools:  
Heavy-duty/Extreme-duty/Ditching  
Buckets; Hammers; Thumbs;  
Compaction plates.

### UPPER STRUCTURE

Rubber bumper guard – order through  
Service Parts  
Catwalk – left and right side

### UNDERCARRIAGE

27.6 in (700 mm) steel shoes,  
triple semi-grouser  
33.5 in (850 mm) steel shoes,  
triple semi-grouser

### OPERATOR ENVIRONMENT

FOPS cab top guard – Level 2  
Front grill guard – 2 x 2 in (50.8 x 50.8 mm)  
screen mesh  
Front rock guard – vertical bars  
Two piece/OPG 1  
Front rock guard – vertical bars  
One piece/OPG 2  
Vandal guard (front window) with  
common key  
Rain deflector – not available with  
Front guards  
Sun visor  
Max View Monitor - 3 cameras with  
270-degree view  
LED Package:  
Includes 6 LED Lights – 2 front cab  
mounted, 2 rear mounted and 1 mounted  
on each side

**CaseCE.com**

©2022 CNH Industrial America LLC. All rights reserved. CASE is a trademark registered in the United States and many other countries, owned by or licensed to CNH Industrial N.V., its subsidiaries or affiliates. CNH Industrial Capital is a trademark in the United States and many other countries, owned by or licensed to CNH Industrial N.V., its subsidiaries or affiliates. Printed in U.S.A. Contains 10% post-consumer fiber.

IMPORTANT: CASE Construction Equipment Inc. reserves the right to change these specifications without notice and without incurring any obligation relating to such change. Availability of some models and equipment builds vary according to the country in which the equipment is used. The illustrations and text may include optional equipment and accessories and may not include all standard equipment. Your CASE dealer/distributor will be able to give you details of the products and their specifications available in your area.



CASE Construction Equipment is biodiesel-friendly. NOTE: All engines meet current EPA emissions regulations. All specifications are stated in accordance with SAE Standards or Recommended Practices, where applicable.



Always read the Operator's Manual before operating any equipment. Inspect equipment before using it, and be sure it is operating properly. Follow the product safety signs and use any safety features provided.

Form No. CCE202209CX365ESR

**CX365E SR**

**7 of 7**