

D35S-9 | D40S-9 | D45S-9 | D50C-9 | D55C-9

Midsize-Capacity Diesel Pneumatic Tire Forklifts



Tap to zoom



- Midsize chassis – 8,000- to 12,000-pound range
- Powerful 3.4-liter D34 diesel engines
- Three performance modes (ECO/STD/HIGH)
- IP65-rated dust and waterproof connectors
- Auto-shift transmission with Shift Pro-Tek hot-shift protection

[Contact Dealer for Pricing](#)

[Find a Dealer](#)

[View Current Offers](#)

[Request a Demo](#)

Overview

Expanding upon our long tradition of delivering reliable, powerful performance, these midsize diesel IC pneumatic tire forklifts from Bobcat offer the best possible value. They provide increased productivity, improved comfort and some of the lowest overall costs of ownership of any competitive forklifts on the market.

- Superb ergonomics
- Operational enhancements
- Reliable productivity
- Lower total cost of ownership (TCO)

Specs & Compare

[Show more](#)

Features & Benefits

[Collapse All](#)

Operational Enhancements ¹³

Operator Sensing System (OSS)

Should the operator leave the seat, the OSS automatically initiates these functions:

- Quickly stops all truck movement
- Locks the lift, lower and tilt functions of mast and hydraulic assemblies
- A seatbelt warning light will alert the operator to re-fasten the seat belt
- The shift selector must be in the neutral position in order to re-start the truck

▲ **Guardian Stability System (GSS)**

- Decreases Travel Speed by 50% when traveling with mast raised beyond Primary stage
- Forward Tilt Reduced to 2° when traveling with mast raised beyond Primary stage
- Alarm Sounds when traveling with mast raised beyond Primary stage and Tilt > 2°
- Auto Speed Control Sensors Indicate Sharp Turn and reduces travel speed proportionately

▲ **Bar Type Overhead Guard**

The precisely designed Overhead Guard (OHG) profile has an optimized bar thickness and arrangement, providing strength and a clear view.

▲ **High Visibility Mast**

The forklift has hydraulic hoses and mast chains which are strategically placed to enhance forward visibility.

▲ **Low Profile Dash**

Greatly enhances forward view of load or while travelling.

▲ **Electronic Parking Brake**

Automatically applies brakes should operator leave the seat. The release is conveniently located next to the hydraulic control levers. The actual braking mechanism is mounted inside the transmission.

▲ **Strobe, Alarm, Mirrors**

A strobe, backup alarm, and side mirrors come standard on all models.

▲ **Rear Grab Bar w/ Horn Button**

Allows operator to sound the horn while holding onto the rear grab bar handle and travelling in reverse. Standard on these models.

▲ **Automatic Deceleration**

When the operator removes foot from the accelerator pedal, automatic deceleration slows the truck in a controlled manner.

▲ **Orange Seat Belt**

Orange seatbelt has a sensor to remind the operator to remain belted at any time the truck is in operation.

▲ **Programmable Speed Limit**

Easily programmable to match travel speeds (forward and/or reverse) to a particular application or setting.

▲ **Load-Sensing Hydraulic System**

Provides better overall performance by increasing power while truck is under load.

▲ **3-Point Entry/Exit System**

A hand rail along mast, the seat armrest, and large anti-slip step plate enhance entry and exit.

▲ **Advanced Ergonomics** ¹⁰

▲ **Low Effort Foot Pedal**

Reduces operator effort by as much as 70% when depressing the pedal.

▲ **Smaller Steering Wheel w/ Turning Knob**

Features a smaller steering wheel which means less steer fatigue.

▲ **Telescopic and Tilting Steering Column**

The steering column is adjustable to meet varying operator sizes.

▲ **Spacious Head and Legroom**

Enhanced comfort for operators of different sizes.

- Operator legroom is increased by over 30% compared to previous series

▲ **Recessed Tilt Cylinders**

The tilt cylinders are completely recessed under the floorplate for increased floorspace and easier entry & exit.

▲ **High Comfort Seat**

The seat is wide and comfortable. It is fully adjustable to fit a variety of sizes.

▲ **Full-Color LCD Display**

The 5 in. or 7 in. LCD monitor is bright and clear, providing good visibility outdoors to quickly and easily check truck conditions.

▲ **Operator Convenience Package**

Provides excellent storage for paperwork, refreshments, small tools, etc.

▲ **Thick Rubber Floor Mat**

Thick, fitted rubber floor mat reduces heat & noise.

▲ **Easy Entry & Exit**

3-Point entry and exit features make getting onto or off of the vehicle much less strenuous.

▲ **Simplified Serviceability** ¹¹

▲ **Fewer Scheduled Service Intervals**

Fewer scheduled maintenances save you time and money.

- Engine oil change interval is every 1,000 hours. (was 500 hrs.)

- Transmission oil change interval is once every 2,000 hrs. (was 1,000 hrs.)
- Drive axle oil change interval is now every 1,000 hrs. (was 500 hrs.)

▴ **Well-Positioned Maintenance Components**

- The air filter service alert displays on the dashboard
- All fuse and relay access is centralized and easy to access

▴ **Quick Access to Key Elements**

- Battery
- Air filter
- Oil filter
- Dipstick and fluid level indicators

▴ **Bright & Informative LED Display**

Large, bright, and intuitive display provides truck health status quickly and easily.

▴ **Tool-Free Access Panels**

The floor plate and side panels are easily detached without tools, making inspections much faster.

▴ **Auto-Maintenance Notifications**

Important maintenance details such as truck service codes and consumable replacement cycles are communicated via the display.

▴ **Easy-to-Read Diagnostics**

The technician can easily diagnose truck conditions using only a cable and laptop.

▴ **Wide Opening Engine Cover**

Improves access to engine and maintenance components for inspection or maintenance.

▴ **Easy Access to Maintenance Points**

Makes maintenance and inspections quick and simple, so you can get back to doing more.

▴ **Dual Element Air Cleaner**

This feature offers added protection to the engine's air intake, which extends engine life and reduces maintenance costs.

▴ **Onboard Diagnostics**

OBD allows you to diagnose the vehicle as well as to set its performance parameters via a laptop (no special tools required).

▴ **Enhanced Productivity** ¹³

▴ **Doosan Diesel Engines**

Doosan diesel engines are cutting-edge. Loaded with the latest technology, these engines are powerful, clean and quiet-running, making them some of the best diesel engines available anywhere.

▴ **Well-Situated Hydraulic Levers**

No need to reach or hold the arm in an unnatural position, reduces operator fatigue.

▴ **3 Selectable Performance Modes**

This engine comes with three selectable performance modes: (ECO/STD/HIGH)

- In ECO Mode the truck is set for optimal fuel economy
- In Standard Mode, the truck is set for normal output
- High-Performance Mode increases the power output of the truck for tough working applications or carrying heavier loads

▴ **Optimized Cooling Capacity**

The integrated super duty cooling system offers the outstanding heat reduction of heavy-duty radiators without the added costs.

- Dual-module radiator allows truck to run much cooler
- Transmission oil flow increased by 60%
- A newly designed heavy-duty fan increases airflow
- Counterweight design increases airflow efficiency
- Steel, lumber, stone, tile, or recycling: even the most grueling applications are covered by the advanced cooling system

▴ **Industry-Specific Application Packages**

Large-capacity diesel pneumatic tire forklifts offer you specialized packages for those extreme applications. Customize your truck to fit the job and improve efficiency.

- The anti-dust package minimizes particulate buildup on the forklift. This is the preferred option for tough applications such as lumber and stone, steel, ceramic tiles, solid fertilizers, cotton, and recycling.
- Our foundry package is recommended for customers who mainly operate trucks in high-temperature environments such as foundry (iron, aluminum, or nonferrous metals), casting, forging, and rolling.
- The anti-corrosion package is recommended for high-temperature and high-humidity environments. Package minimizes damage to the forklift from being corroded by acid, moisture, or salt environments found in applications such as fisheries, ports, chemical processing and storage, sugar, and beverage.

▴ **IP Rated Water-Resistant Electrical Connectors**

The use of IP-rated connectors protects the electrical components from ingress of moisture and debris, assuring you that your truck will be ready to work in various climates and weather conditions.

▴ **Electronic Inching Pedal System Design**

Our newly designed electronic inching pedal offers the operator these features:

- Less pedal effort is required to depress the pedal
- The electronic system means that there is no inching cable or associated costs for maintenance or replacement
- This system is much more responsive than traditional cable inching
- Allows for much less operator fatigue

▴ **LED Combination Lamps**

These are much brighter and longer lasting than traditional bulbs, providing a better view in low light applications.

▾ Transmission Control Unit (TCU)

The TCU monitors and optimizes braking assuring you a more productive vehicle.

▾ Vehicle Control Unit (VCU)

The VCU monitors all aspects of the truck and makes adjustments based on operator input and operating conditions.

- Engine and transmission functions
- Guardian stability system
- Alarms and warnings
- Vehicle displays and service conditions
- Braking

▾ Shift ProTek Hot Shift Protection

Shift ProTek limits directional changes to under 5 mph, allowing for shift-on-the-fly and making quick shuttle applications a breeze. The market-proven Shift ProTek transmission precisely modulates clutch oil pressure for smooth forward and reverse directional changes. Shift on the go without damage to the transmission.

▾ Mast Tilt Indicator

This option displays the tilt angle of the mast for easier reference when entering or placing a load.

▾ Modular or Full Cabin

Introducing a new level of cabin comfort, these standard or optional cabins feature:

- Full floating for less vibration and improved comfort
- Cushioned for quiet comfort
- LED combination lamps for additional illumination in low light conditions
- Tilting roof & sun visor
- Curved, one-piece front glass
- High-performance double wiper arm
- Air conditioner and heater (optional)
- Internal/external air circulation control
- Cabin air filter to help reduce dust inflow
- Expanded glass panel for improved visibility

▾ Durable Reliability ⁹

▾ Doosan Diesel Engines

Featuring the latest in advanced technology, these diesel engines set the pace! Power when you need it, clean burning, and reliable, these engines are among the best in the material handling world.

▾ Oil Cooled Disc Brakes (OCDB)

This best-in-class brake system comes with a 5-Year or 10,000 working hour warranty.

- Discs are submerged in oil, keeping them cool and limiting wear
- 100% of friction material is used for superior stopping power
- OCDB are more easily serviced in the field than traditional brakes
- System is sealed for maximum protection against contamination

▾ Super Duty Cooling System

The integrated super duty cooling system offers the outstanding heat reduction of heavy-duty radiators without the added costs.

- Dual-module radiator allows truck to run much cooler
- Transmission oil flow increased by 60%
- A newly designed heavy-duty fan increases airflow
- Counterweight design increases airflow efficiency
- Steel, lumber, stone, tile, or recycling: even the most grueling applications are covered by the advanced cooling system

▾ Robust Hydrostatic Steer Axle

- No mechanical connections between the steering wheel & steer axle
- Fewer moving parts mean fewer things that could fail, assuring maximum run-time.
- Low-effort steering for operator comfort and reduced fatigue
- Quick steering response for increased maneuverability
- Grease fittings on kingpin and steer linkage for easy maintenance
- Shock-absorbing steer axle bushings extend the service life of the unit

▾ Superior Components vs. Competitive Models

The steer axle assembly is built with durable components which enhance product life and reduce maintenance costs.

- Larger diameter kingpins and tapered roller bearings for a stronger axle
- Tapered rollers are stronger against side impact forces
- Tapered roller bearings have an inner race to eliminate wear on the kingpin

▾ Water Resistant Electrical Connectors

The use of IP (Ingress Protection) rated connectors protects the electrical components from ingress of moisture and debris, assuring you that your truck will be ready to work in various climates and weather conditions.

▾ Heavy Duty U-Joint Connection

The U-joint helps reduce shock and vibration to the engine resulting in fewer engine problems. This configuration also improves serviceability, further lowering maintenance costs.

▾ High-Capacity Air Cleaner

Additional capacity of air cleaner extends engine life and reduces maintenance costs.

▾ Transmission Embedded Parking Brake

- Built-in parking brake assembly is in the transmission for added durability
- Parking brake is released automatically when the operator starts the truck
- Parking brake is automatically applied when the operator leaves the seat
- Parking brake automatically engages when the ignition is switched off

^ Lower Cost of Ownership ²

^ Fewer Scheduled Service Intervals

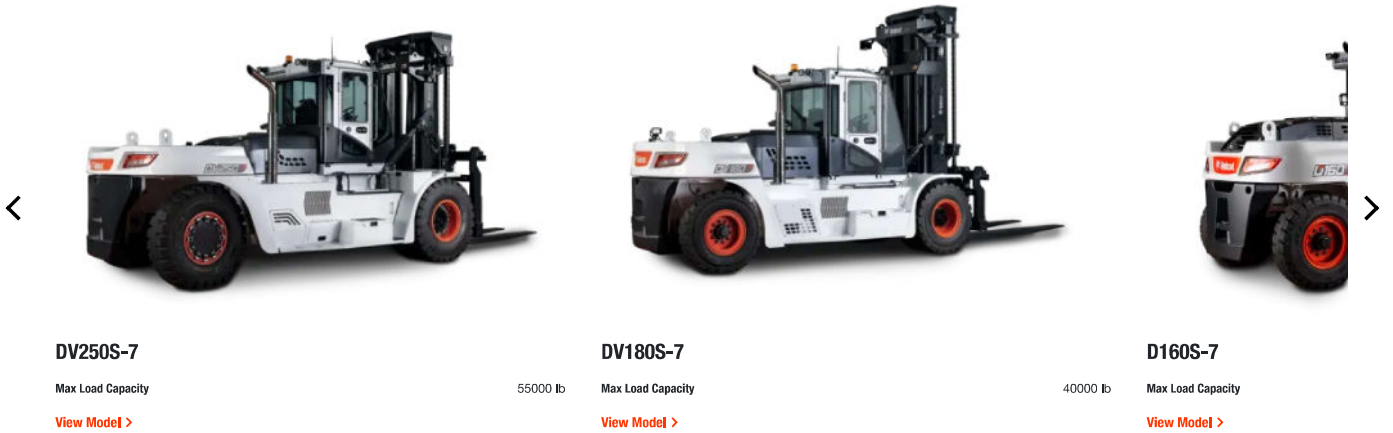
Fewer scheduled maintenances save you time and money.

- Engine oil change interval is every 1,000 hours. (was 500 hrs.)
- Transmission oil change interval is once every 2,000 hrs. (was 1,000 hrs.)
- Drive axle oil change interval is now every 1,000 hrs. (was 500 hrs.)

^ Eco Mode

These fuel-efficient engines allow the user to choose from either Standard Mode or Eco Mode. Eco Mode saves on fuel costs.

Related Models



[View All Internal Combustion Pneumatic Tire Forklifts >](#)



WARNING: This product can expose you to chemicals including engine exhaust (including diesel engine exhaust when equipped), lead and lead compounds, mineral oils, soots, phthalates, and carbon monoxide which are known to the State of California to cause cancer and birth defects or other reproductive harm. For more information go to www.P65Warnings.ca.gov.

Certain specification(s) are based on engineering calculations and are not actual measurements. Specification(s) are provided for comparison purposes only and are subject to change without notice. Specification(s) for your individual equipment will vary based on normal variations in design, manufacturing, operating conditions, and other factors.

REGION SELECTOR

NORTH AMERICA (EN)

BUYING TOOLS

BUILD & QUOTE

SEARCH INVENTORY

FIND A DEALER

SPECIAL OFFERS

REQUEST A DEMO

CONTACT A DEALER

BUYING RESOURCES

CONTACT US

CUSTOMER SERVICE

WEBSITE FEEDBACK

DEALER OPPORTUNITIES

GOVERNMENT SALES

FREQUENTLY ASKED QUESTIONS

EMAIL SIGN-UP

COMPANY

ABOUT US

INNOVATION

COMMUNITY

PEOPLE

BOBCAT STORIES

AMBASSADORS

LEGAL

PRIVACY POLICY

TERMS & CONDITIONS

RECALLS



One Tough Animal.

DOOSAN

Bobcat Company is a member of the Doosan Group. Doosan is a global leader in construction, grounds maintenance and material handling equipment, power and water solutions, and engineering that has proudly served customers and communities for more than a century.

Bobcat®, the Bobcat logo, the colors of the Bobcat machine and various other product names referenced on this website are trademarks of Bobcat Company in the United States and various other countries.

©2024 Bobcat Company. All rights reserved.